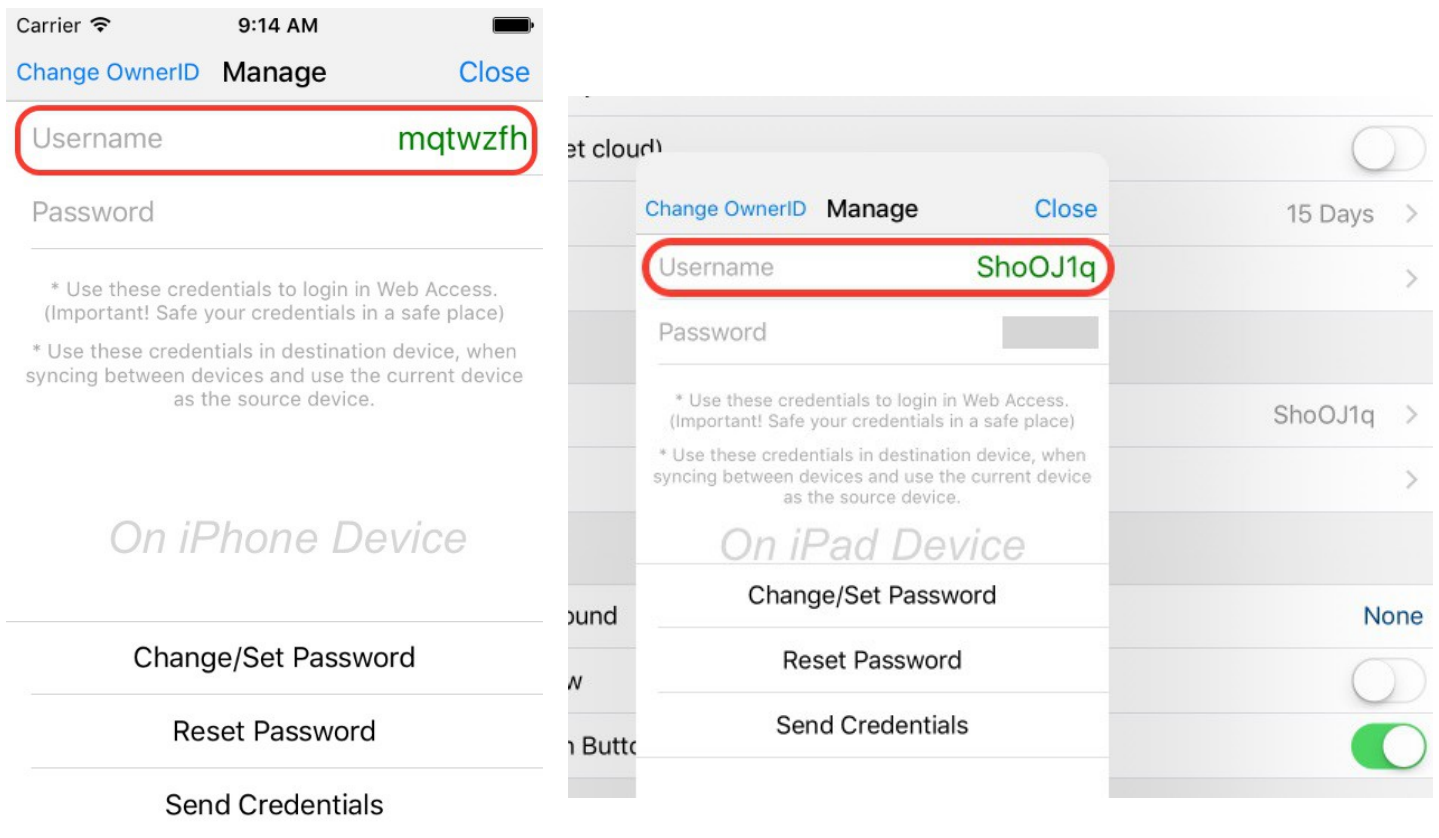


## My Pet Sync between devices | Quick How to

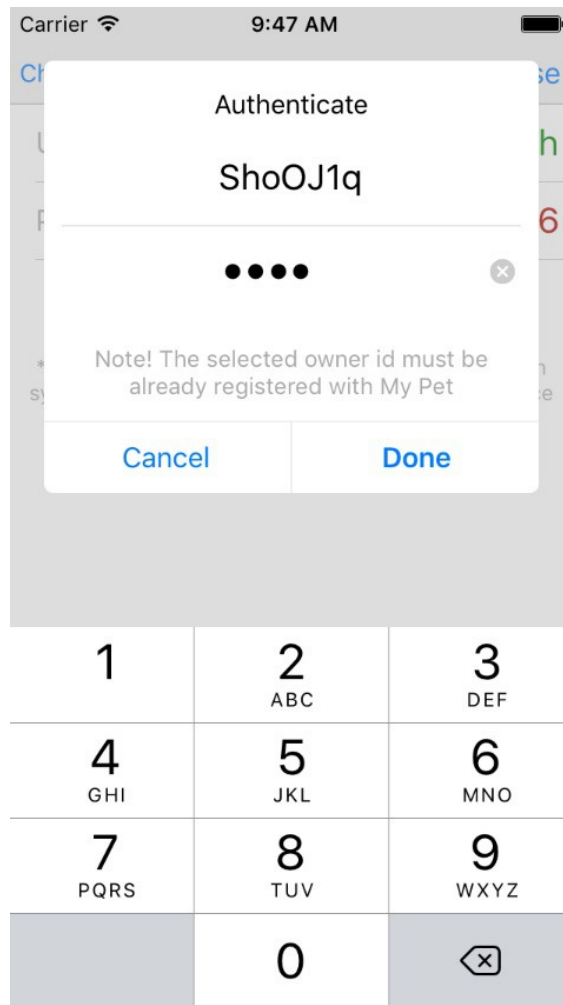
My Pet currently supports sync between 2 or more devices using My Pet cloud. In every installation of My Pet there is a unique OwnerID which identifies the owner/device and used to sync devices or access Web Access Portal.

Assume a user have 2 devices an iPad and an iPhone. By default My Pet on these devices the OwnerID is different.

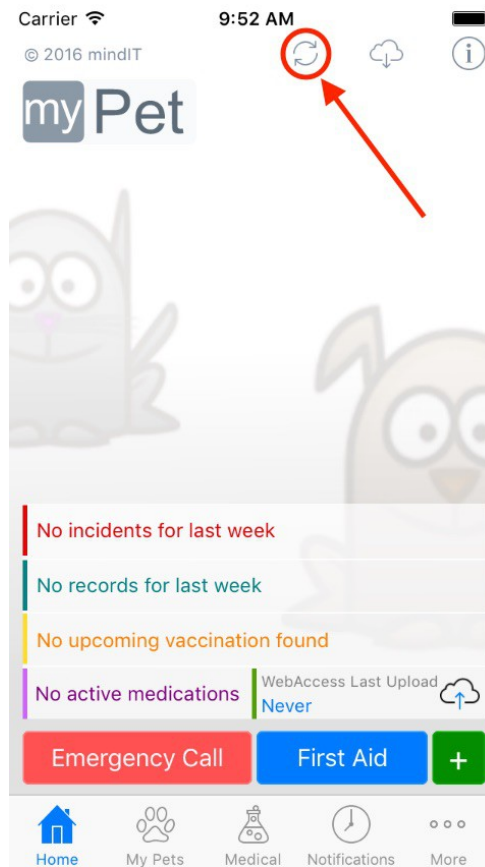
To view the OwnerID, tap in **More** tab, scroll down, tap in **Admin**, scroll down and tap in **Account Manage** option.



The user must select which OwnerID will use on both devices. Assume that the user wants to use the OwnerID on iPad (i.e. ShoOJ1q); On other device (iPhone), enable Internet connection, tap in Change OwnerID (upper left button) and insert the OwnerID(Username) and password of the account in iPad.

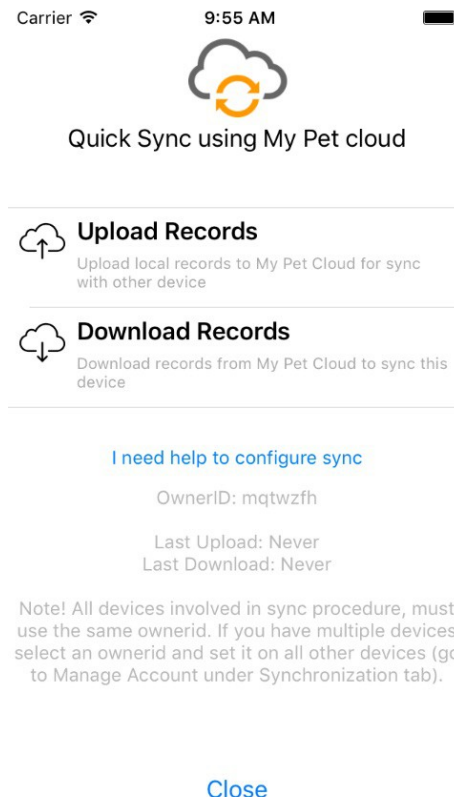


Now both devices will use the same credentials. To sync in Home screen tap in sync icon.



Select **Upload Records** to upload the pet's records to My Pet Cloud in order to get downloaded from your other devices using the same credentials.

To Download the uploaded records (and sync) on other device tap in Download Records option.



Note! Use the same credentials to access the uploaded records in Web Access Portal.